



# Catching Up

## In the Lockyer Catchment

AUGUST 2011

### LOCAL NEWS and EVENTS

**30th Aug 11 ABC Landcare Tree Planting Day** Tree planting day at Terry Bischoff's and Olives Australia will start at 9.30 am **Tuesday 30<sup>th</sup> August** and end with a BBQ. Contact Robyn McIntosh, Treasurer/Secretary, Atkinson/Buaraba Creek Catchment Landcare Group Inc. phone 54264304 or 0488128924 view <http://www.abclandcare.com.au>

**Two Community Information Sessions to be held with LVRC for Weedbuster Week 2011 which is held between September 5-11** for more details contact Ross Bigwood, Community Partnerships Manager (Lockyer) Phone 5465 2011, Fax 07 5465 2811, Mobile 0438 162113 or Email : [rbigwood@seqcatchments.com.au](mailto:rbigwood@seqcatchments.com.au)

**Your Group can get involved :** Register on the **National Weedbuster** Website go to [www.weedbusters.info](http://www.weedbusters.info) When you register you will receive an Event Organiser's kit containing information to help you plan your event or for more information about Weedbusters, contact the Queensland Weedbuster Coordinator on 07 32247704 or email [petra.skoien@deedi.qld.gov.au](mailto:petra.skoien@deedi.qld.gov.au)

**Grant writing workshop on Wednesday 24 Aug 11**

*how to win funds and influence panels*

a free grant writing workshop for volunteer environment, conservation, wildlife, landcare and catchment community groups to be held at the SEQ Catchments Ipswich Office, 52a Tiger Street, Ipswich RSVP: Thursday August 18 to Justin on 3211 4413 or email [justin@landcare.org.au](mailto:justin@landcare.org.au)

We have been looking at revamping a newsletter in the Lockyer for some time and have finally have found some time to do so. This year has been very busy with the devastating floods in January having a large impact in the Lockyer. I would like to take this opportunity to thank the community groups, individuals and organisations for their support through these trying times. It has been inspirational to observe the community spirit at work in the catchment. Donations have rolled in, projects have been undertaken and a difference has been made to many of those affected by the floods. Debris cleanup has occurred in Murphy's Creek, Postman's Ridge and at Esk in the Upper Brisbane catchment in some of the worst affected areas. It was great to see local Landcare Groups leading the way in these collaborative projects involving both State and Local government. Individuals in other areas have worked tirelessly to coordinate volunteer efforts and donations to reinstate fences lost in the floods and help landholders get back on their feet.

Technical experts have provided input into measures to address erosion and creek bank stability issues. Some travelled from interstate to help develop plans to restore sections of the creek. An important message is the need for the right vegetation at the right location in order to build resilience into our riparian areas and minimize damage from future events.



Picture above -.....

Fallen large woody debris like that in this picture can be used to help stabilize creek banks to reduce the likelihood of erosion in the future. If you need advice on any erosion issues please contact Ross Bigwood.



## RESOURCES - GRANTS - EVENTS

**Queensland Landcare Conference: *Generations of Guardians*** Recruiting and retaining Landcare volunteers is challenging, but at this year's Landcare Conference, several sessions will focus on how to go about engaging volunteers. **Ayr 20–23 September**. Early bird registration is open until 30 June. For further information visit the [Landcare conference website](http://www.landcareconference.com.au) or contact the event manager on 5538 5109 or by email at : [landcare2011@wombatcreative.com.au](mailto:landcare2011@wombatcreative.com.au).

**Flood and cyclone recovery assistance extended to 2012** To find out more about recovery grants and concessional loans contact QRAA on [www.qraa.qld.gov.au](http://www.qraa.qld.gov.au)

**The Jenny Reeve Quiet Achievers Awards** are due to be handed out at the next SEQPAF. These are awards given to individual and teams who are diligent in their work and never seek fame for themselves. Please take the time to nominate co workers. **Send nominations to Clyde McGaw, [clyde.mcgaw@deedi.qld.gov.au](mailto:clyde.mcgaw@deedi.qld.gov.au), before 30 September 2011.** web [www.biosecurity.qld.gov.au](http://www.biosecurity.qld.gov.au)

**Soil and Plant Nutrition** Cutting edge 2 day soil & plant management workshop for the 21st Century. This will be one of the most inspirational soil and plant workshops you will ever attend. You will find answers to many of the questions which have confused and frustrated you in the past. Learn about the connection between soils, plants, nutrient cycling, microbes and your management from one of the industries most knowledgeable presenters, Bart Davidson, with real hands on skills. Kingaroy [13th September](#), Goondiwindi [15th September](#)

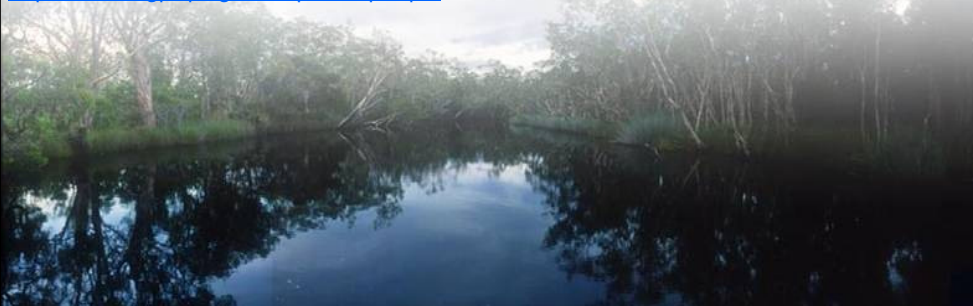
**Grazing Land Management Course** This Edgenetwork workshop package consists of the three-day workshop, a follow-up day (on property, six months after the workshop) and on-going consultation with the deliverers, as needed. By attending this workshop you also get the opportunity to works through Grazing Land Management issues and questions with knowledgeable industry extension officers and other local producers. Inglewood [30th August - 1st September](#).

**The Real Food Festival** The Real Food Festival is the only event, of this scale, on the Sunshine Coast, that is genuinely dedicated to championing, supporting and promoting the best local food available. Only foods and drinks that have been produced under the Slow Food guidelines of 'good, clean and fair' will be accepted. Sunshine Coast [10th - 11th September](#) [A lovely event to combine with a holiday]

**Technology of Growing Grass** The TOGG course works with participants to create a sound understanding of the importance of managing grass based production systems and to develop new and exciting strategies to achieve success as a rural business. The course covers the topics of carbon management, compost teas and property planning to develop real management strategies. Toowoomba [27th September](#).

**Soil erosion guides for landholders available online**  
Industry and Investment (NSW Department of Primary Industries) has a comprehensive booklet on methods of preventing and repairing soil erosion on farms.  
See <http://www.dpi.nsw.gov.au/agriculture/resources/soils/erosion/saving-soil>  
The online **Qld Soil Conservation Handbook** has been based on the large investment through the 80's in soil con work throughout Qld.  
See [http://www.derm.qld.gov.au/land/management/erosion/index.html#design\\_manual](http://www.derm.qld.gov.au/land/management/erosion/index.html#design_manual)

**Website of interest** : view the *Parks for People* website:  
<http://www.dlqp.qld.gov.au/parks4people>



## GROUPS CORNER Meetings - Functions - Events - News Lockyer Catchment

<http://www.hmclandcare.org.au/>  
**Helidon Hills/Murphy's Creek Landcare Inc** Meetings held from 1-3.30pm each 3rd Sunday on a bi-monthly basis  
Next Meeting will be held on 18 Sep 11 at 238 Goldmine Rd Helidon.  
AGM will precede GM, followed by afternoon tea—bring a plate  
Phone Secretary Jeff Birnie 4697 6610

<http://www.abclandcare.com.au>  
**Atkinson/Buaraba Creek Catchment Landcare Group Inc.**  
Next Meeting is AGM Tuesday 23 Aug 11 at Coominya State School  
Contact Robyn McIntosh, Treasurer/Secretary ph 54264304 or 0488128924

**West Moreton Landcare Group**  
361 Rosewood-Marburg Rd  
Tallegalla QLD 4340 Ph 5464 4401  
the group meets on the 3<sup>rd</sup> Thursday of every month

**Lockyer Valley Landcare**  
13 Berghofer Dr  
Withcott 4352  
(07) 4637-4642  
[gandpgrimes@bigpond.com](mailto:gandpgrimes@bigpond.com)

Please send information on your Groups activities, events, workshops and meeting dates to the Community Partnerships Manager if you would like to have it included in this Newsletter.

SEQ CATCHMENTS OFFICE  
9 Spicer St, Laidley Q 4341  
Phone 5465 2011  
Fax 5465 2811

Ross Bigwood  
Community Partnerships Manager (Lockyer)  
Ph 07 5465 2011, Fax 07 5465 2811,  
Mobile 0438 162113  
Email [rbigwood@seqcatchments.com.au](mailto:rbigwood@seqcatchments.com.au)

